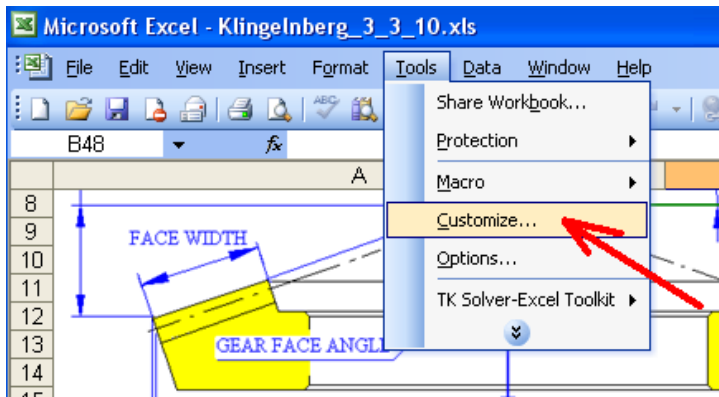
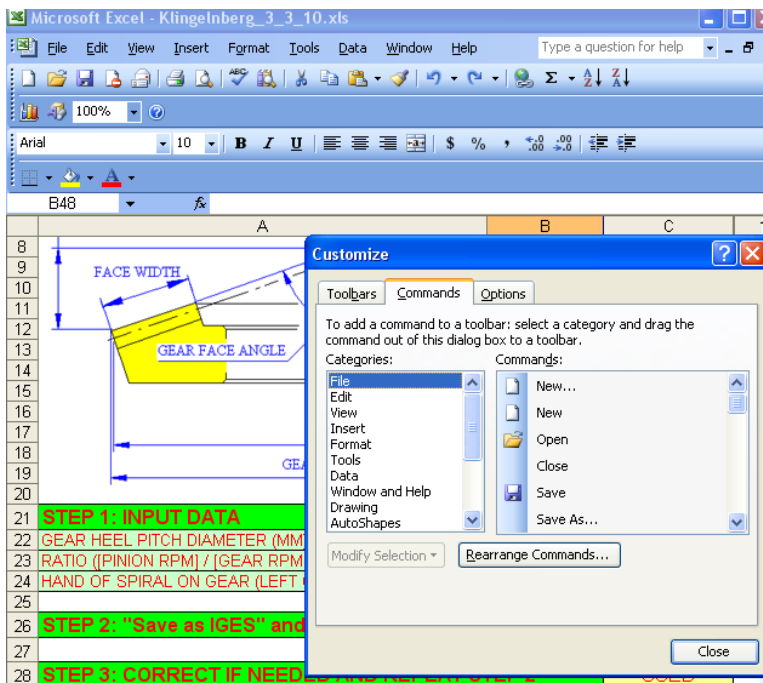


Assign macros in MS Excel 2003.

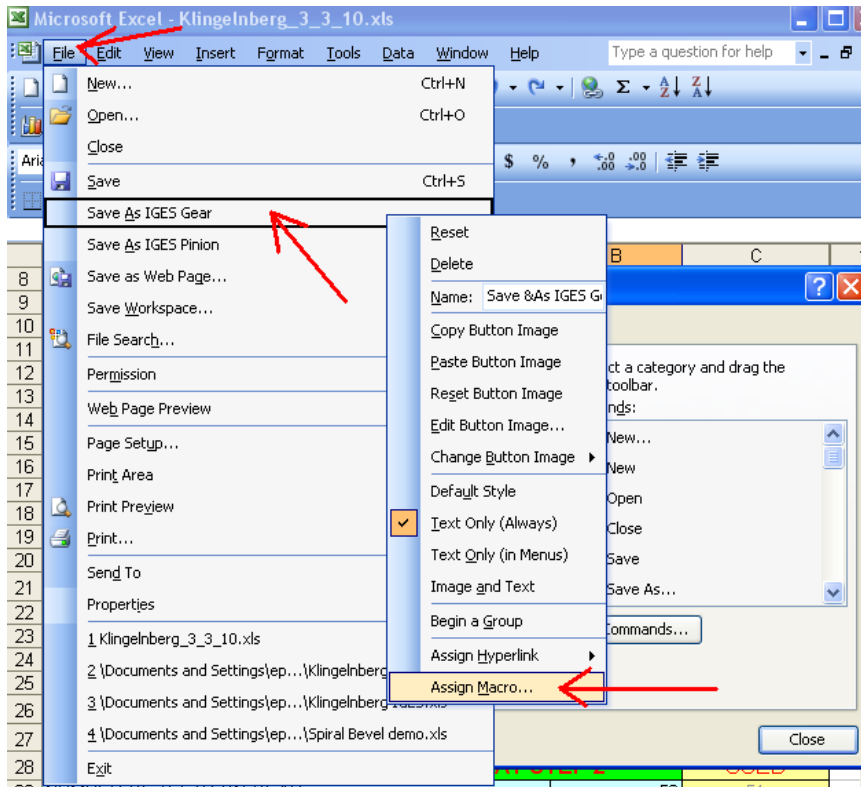
1. Click TOOLS and select Customize



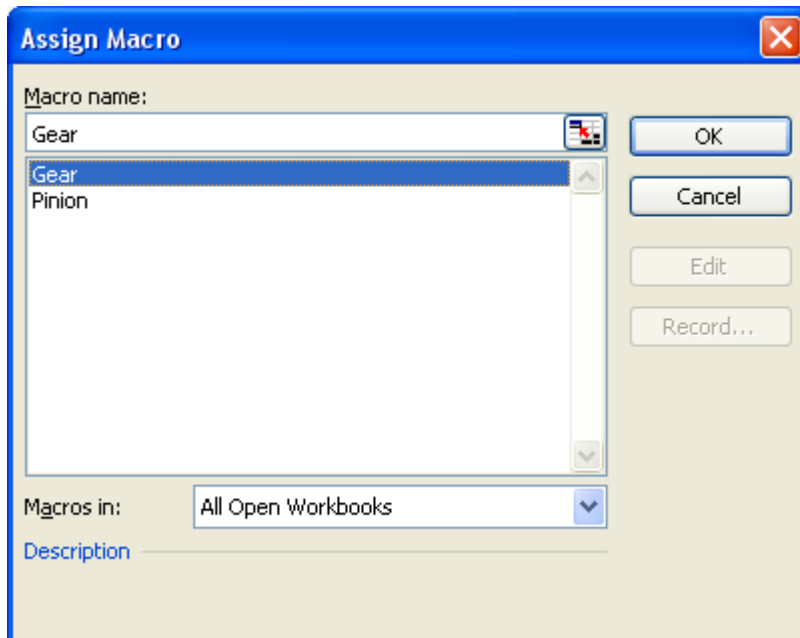
A new window will open:



2. On the main window click FILE, then right click on "Save As IGES Gear", then click on "Assign Macro"



3. Assign Macro window will open. Select a macro for Gear and click OK



4. The same way assign the Pinion macro.
5. When using the program you may need to repeat assigning the Gear and the Pinion macros if the program can not find them.