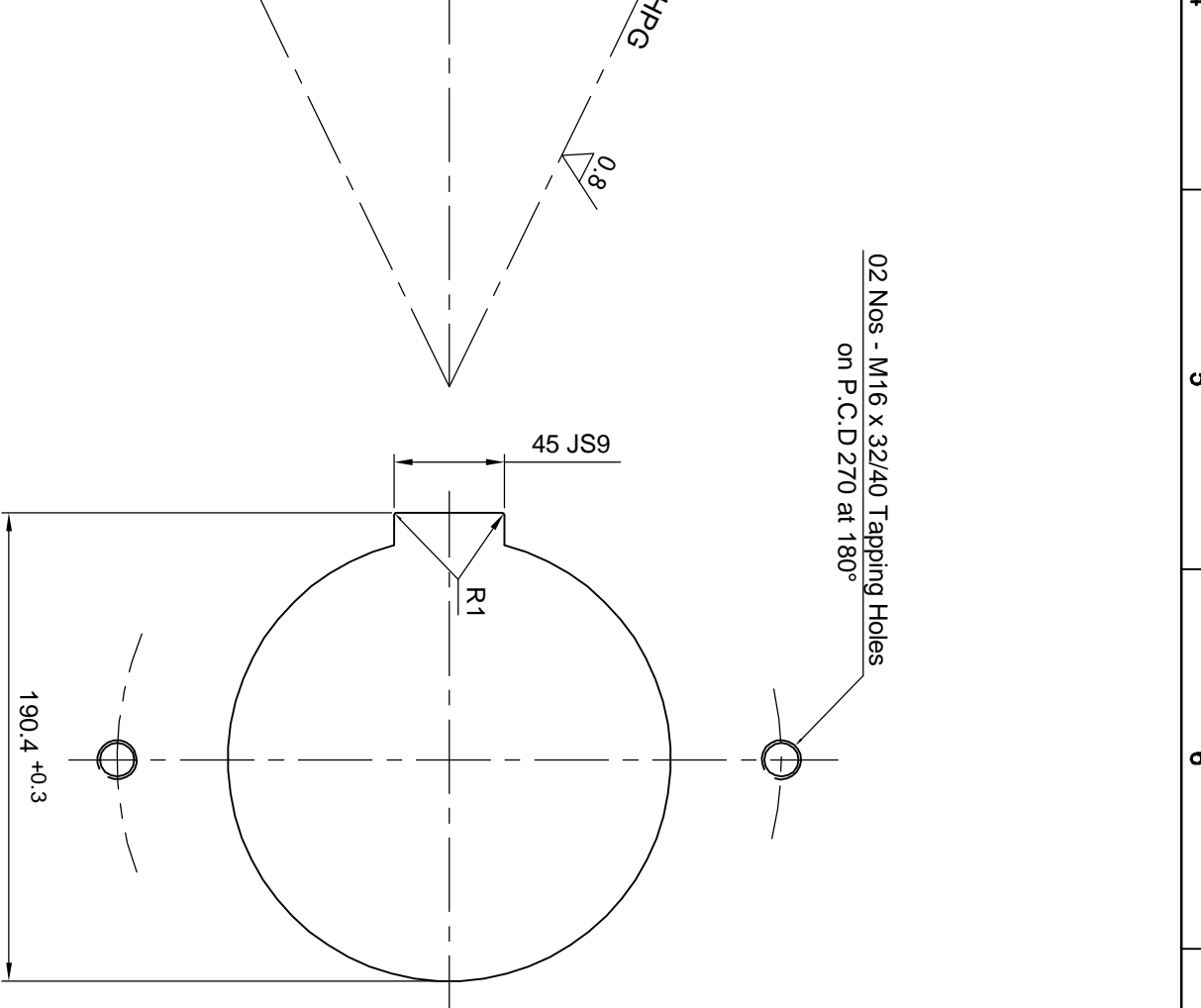
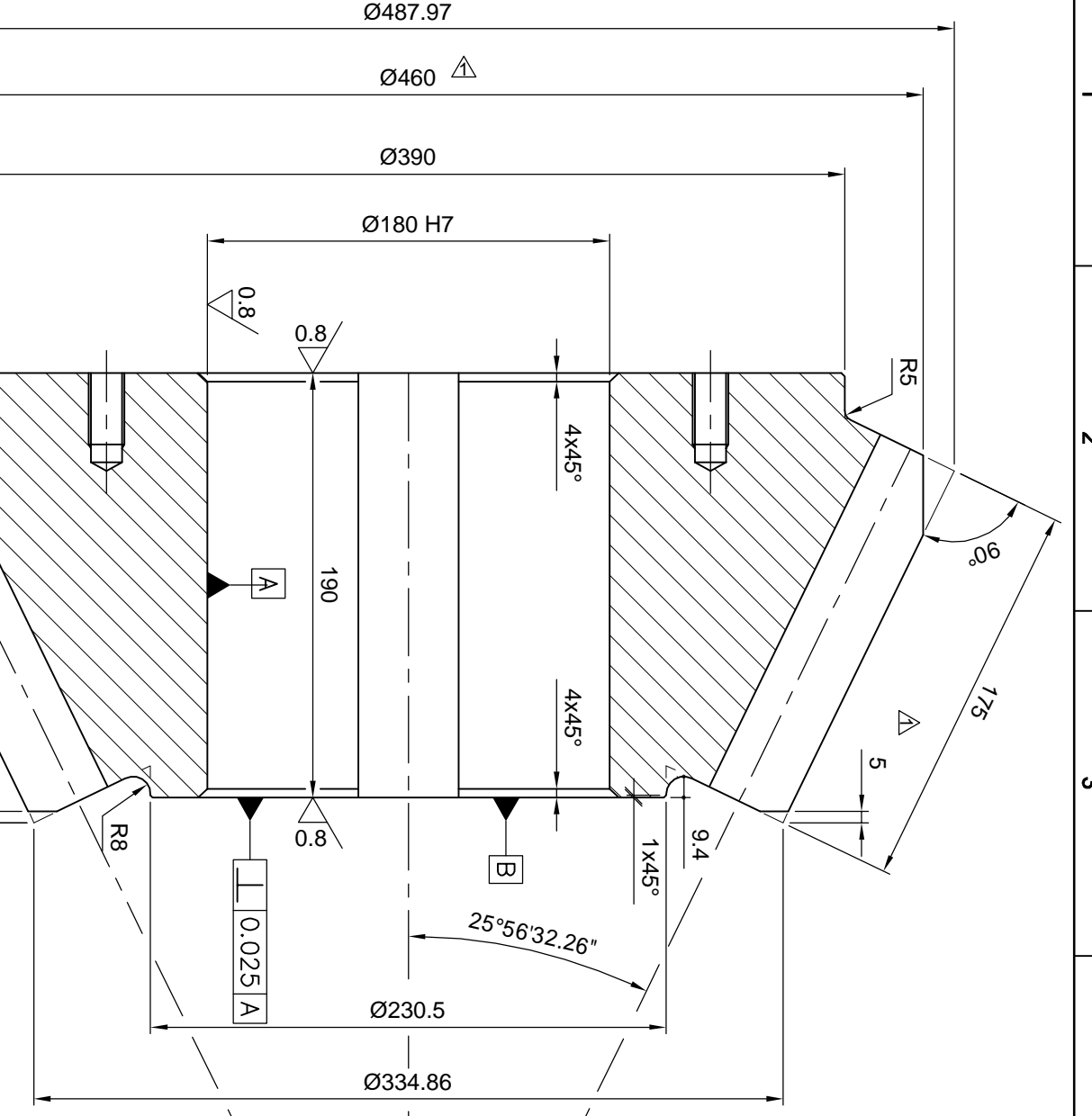


GEAR DATA KURVEX			
NORMAL MODULE	mm	17.5	
NO. OF TEETH	Z	--	18 (37)
PRESS. ANGLE	α_n	$^{\circ}/'/'$	20 $^{\circ}$
AXIS ANGLE	--	--	90 $^{\circ}$
SPIRAL ANGLE	β	$^{\circ}/'/'$	35 $^{\circ}$
HAND OF SPIRAL	--	--	R.H
TOOTH DEPTH	mm	36.75	
P.C.D.	d	mm	448.632
PITCH CONE ANGLE	--	$^{\circ}/'/'$	25 $^{\circ}56'32.26''$
OUTER TRAN. MODULE	mm	24.924	
PITCH APEX TO CROWN	mm	451.53	



Material :- 18CrNiMo8
 Hardness :- 58 to 62 HRC
 Final Case Depth :- 1.8 to 2.2 m.m

NOTE:
 1) KEY WAY SHOULD NOT BE OFFSET > 0.20 MM FROM CENTER LINE.
 2) KEY WAY WIDTH SHOULD BE PARALLEL WITHIN 0.04 MM IN 100 MM LENGTH.

3.2 { 0.8 / 1.6 }

KEY WAY DETAIL

FOR PRODUCTION PRINT

Rev.	Zone	Description	Date	Drawn	Apvd.
1		CHAMFER ADDED AS PER SUGGESTION BY PARTY.	7-08-09	JVP	RJG

From	To	Tolerance
~	No machining	
▽	8 to 25 u	±0.1
▽▽	1.6 to 8 u	±0.2
▽▽▽	0.025 to 1.6 u	±0.3
▽▽▽▽	< 0.025 u	±0.5

Free dimension table	From	To	Tolerance
~	6	30	±0.1
▽	30	120	±0.2
▽▽	120	315	±0.3
▽▽▽	315	1000	±0.5
▽▽▽▽	1000	2000	±1.2

This drawing is the property of M/s.Vulcan Gears, and must be returned on request. It is submitted as confidential information in connection with the enquiry, tender order or contract. It is not to be used for any other purpose or order nor it shall be copied or lent without our authority in writing.

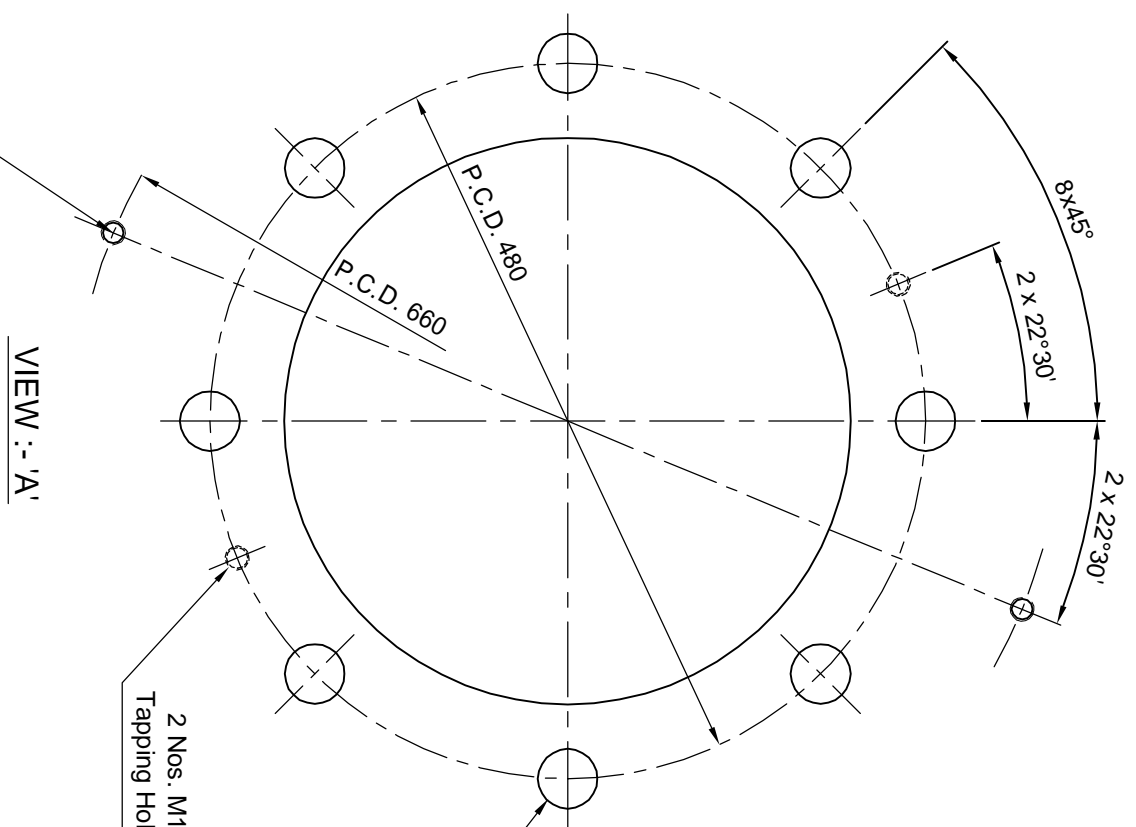
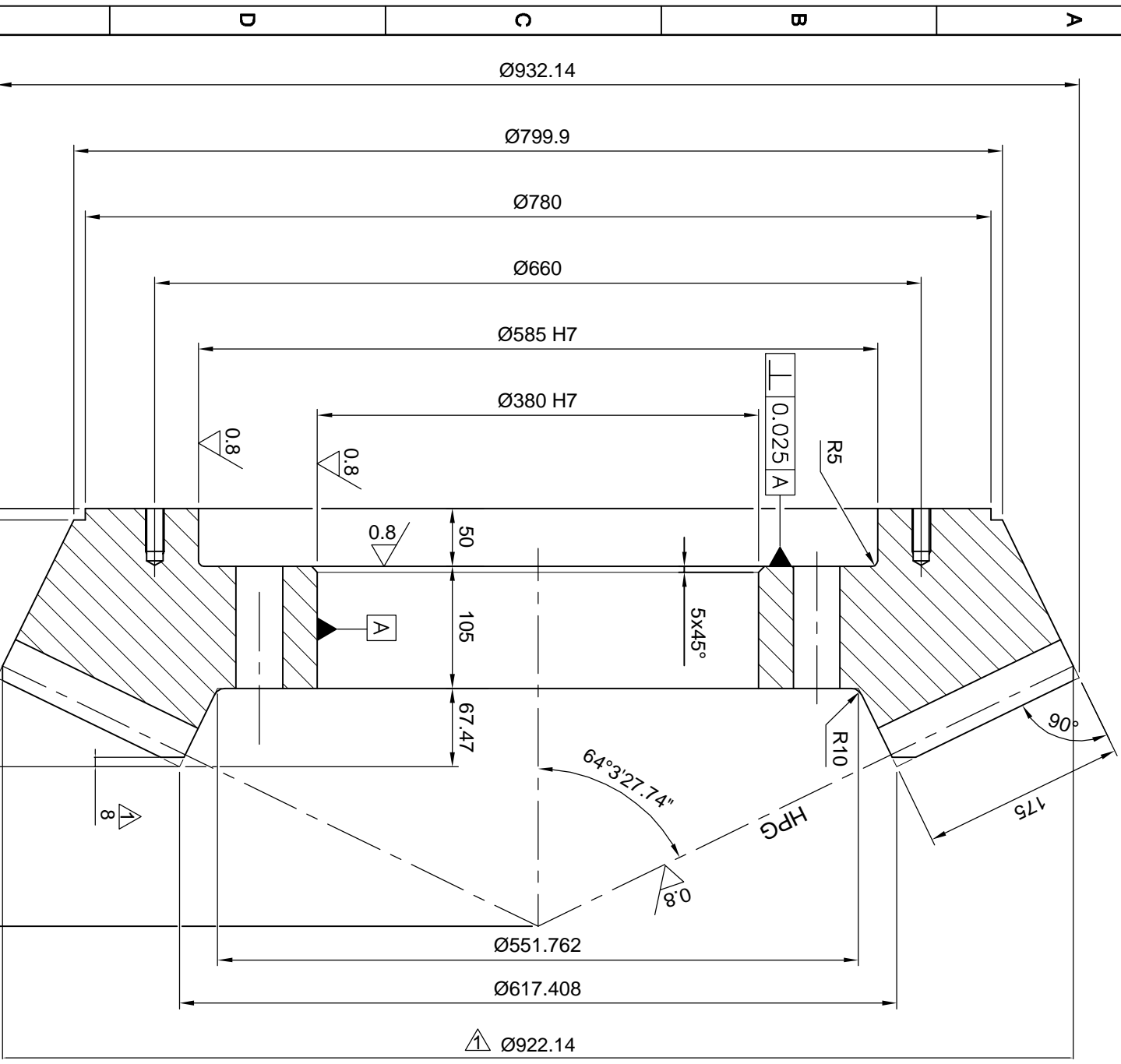
Title:-			
Name	Drawn	Checked	Approved
V/G	JVP	RJG	
Date	22/10/08	22/10/08	22/10/08
Model No.			
Material			
Order No.			
Scale			1:3
Mass Momm. of Inertia (kgm ²)			167.71
Weight (kg)			167.71

Ø180	H7	+0.040
45	JS9	+0.031
		-0.031

Toleranced size Tolerance

Drawing no. 065643
 Supersedes :
 Modified from :
 Vulcan Gears
 701/8, GIDC, V.U. Nagar
 ANAND-388121, Gujarat, India
 Ref: main drawing no.

GEAR DATA KURVEX			
NORMAL MODULE	mm	17.5	
NO. OF TEETH	Z	--	37 (18)
PRESS. ANGLE	α_n	$^{\circ}/'/'$	20 $^{\circ}$
AXIS ANGLE	--	--	90 $^{\circ}$
SPIRAL ANGLE	β	$^{\circ}/'/'$	35 $^{\circ}$
HAND OF SPIRAL	--	--	L.H
TOOTH DEPTH	--	mm	36.75
P.C.D.	d	mm	922.188
PITCH CONE ANGLE	--	$^{\circ}/'/'$	64 $^{\circ}$ 32'7.74"
OUTER TRAN. MODULE	mm		24.924
PITCH APEX TO CROWN	mm		214.09



VIEW :- 'A'

2 Nos. M16 x 45/50 Deep Tapping Holes At. Eq. Spaced.

2 Nos. M16 x 20/25 Deep Tapping Holes At. Eq. Spaced.

8Nos. REAMED HOLES Ø40 H7 THRU

Material :- 18CrNiMo8 OR Equi.
Hardness :- 58 to 62 HRC
Final Case Depth :- 1.8 to 2.2 m.m

FOR PRODUCTION PRINT

3.2 / { 0.8 / 1.6 }

Toleranced size	Tolerance
Ø585 H7	+0.070 0.000
Ø380 H7	+0.057 0.000

Title:- S.B.WHEEL

Drawn V/G **Checked** JVP **Approved** R/JG

Date 22/10/08 **Order No.** 22/10/08

Material Mass Morn. of Inertia (kgm²) 540.53

Weight (kg) 540.53

Scale 1:5

Raw part acc. to drawing **Revision**

Other details acc. to drawing

VULCAN GEARS

70/18, GIDC, V.U. Nagar, AMANP-388121, Gujarat, India

Ref: main drawing no.

Drawing no. **065644**

Supersedes from :-

Free dimension table	Tolerance
From	To
6	±0.1
30	±0.2
6.1	±0.3
301	±0.5
120.1	±0.5
315.1	±0.8
1000.1	±1.2

This drawing is the property of M/s. Vulcan Gears, and must be returned on request. It is submitted as confidential information in connection with the enquiry, tender order or contract. It is not to be used for any other purpose or order nor it shall be copied or lent without our authority in writing.

Rev.	Zone	Description	Date	Drawn	Appd.
1		CHAMFER ADDED AS PER SUGGESTION BY PARTY & REAMED HOLES TO BE DONE WITH MATCHING PART NOTE REMOVED.	7-08-09	JVP	R/JG